



***Fall Protection, Confined Space, & Rescue Solutions***

**Tower Communication Working at Height Rescue Training**

Ratio: 4 students to 1 instructor – Max Class Size - 8

Duration: 16 Hours (2 Days)

**Synopsis:**

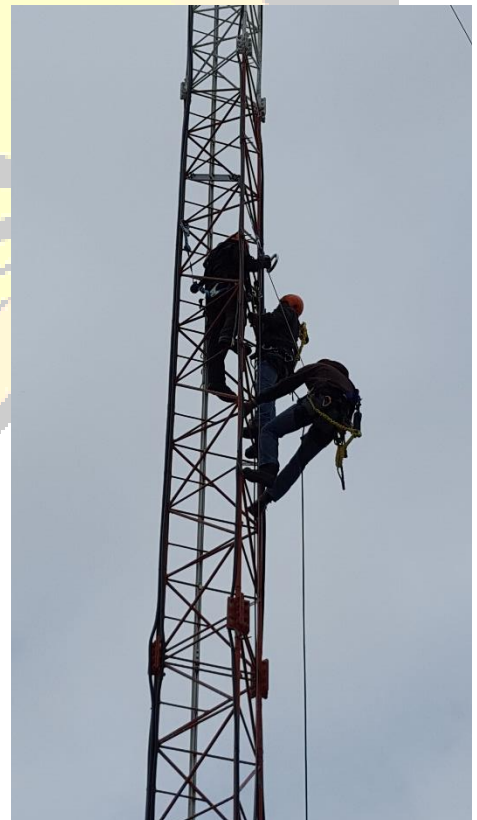
Tower Communication working at height rescue training is designed for those working in the communications tower industry. Students will actively participate over three days while we cover the height safety and rescue course curriculum. The graduating candidates will be deemed to be proficient in the successful rescue of a fallen worker/casualty, suspended or requiring relocation to a safe area for EMS or Response teams to further evaluate and take charge of the casualty. Participants of this curriculum will be able to clearly identify appropriate anchor, connections, body support, set up and rescue of a fellow worker to minimize suspension trauma. Participants certified in the practical aspects of rescue and evacuation while addressing the safety fundamentals of working at height. This program caters to the Tractel Derope automatic control rate descent devices and related equipment and procedures.

**Prerequisites:**

- 1) A minimum of two years of working at heights related to the industry.
- 2) A valid fall protection certification
- 3) A valid basic first aid certification (minimum)

**Topics include:**

- Equipment selection
- Equipment inspection, care and maintenance
- Rescue team selection and managing a rescue
- Anchor selection, Body Support, Proper Connection
- Class room and Practical training on
  - 1) Rescue of a suspended casualty
  - 2) Relocation of a casualty
  - 3) Rescue of an unreachable casualty
  - 4) Hauling and lowering of a casualty
- Simulated automatic decent and rescue
- Simulated suspension and trauma mitigation
- Trouble shooting during exercises to protecting the rescuer and casualty during rescue and safe exercises/refreshers





***Fall Protection, Confined Space, & Rescue Solutions***

**Certification:**

While valid for two years, may be subject to an impromptu assessment/audit per Rubicon Safety Inc.- Rescue team members also require in house on-going familiarization with equipment and procedures quarterly (4-times a year)

**Compliance Meets:**

Canada Provincial or Federal OHS Regulation, CAN/CSA Z259 Fall Protection Standards. USA: OSHA 29CFR 1910 &1926, ANSI Fall Protection Standards Z359. All training is conducted in accordance with CAN/CSA Z1000-06 Section 4.4.4 "Occupational health and safety management." And ANSI Z490.1 "Criteria for Accepted Practices in Safety, Health, and Environmental Training".

Note: Students must be medically and physically fit and hold a valid safe access & rescue certification. For further information contact Rubicon Safety Inc at: 1 (416) 999-930



**References Used:**

**Federal and Provincial Occupational Health and Safety Regulations**

**CSA Standards  
ANSI Standards**

**Manufactures Guide lines for use and care**  
Tractel, DBI/Sala, Safety Direct, Miller, North, Norguard.  
Ect..